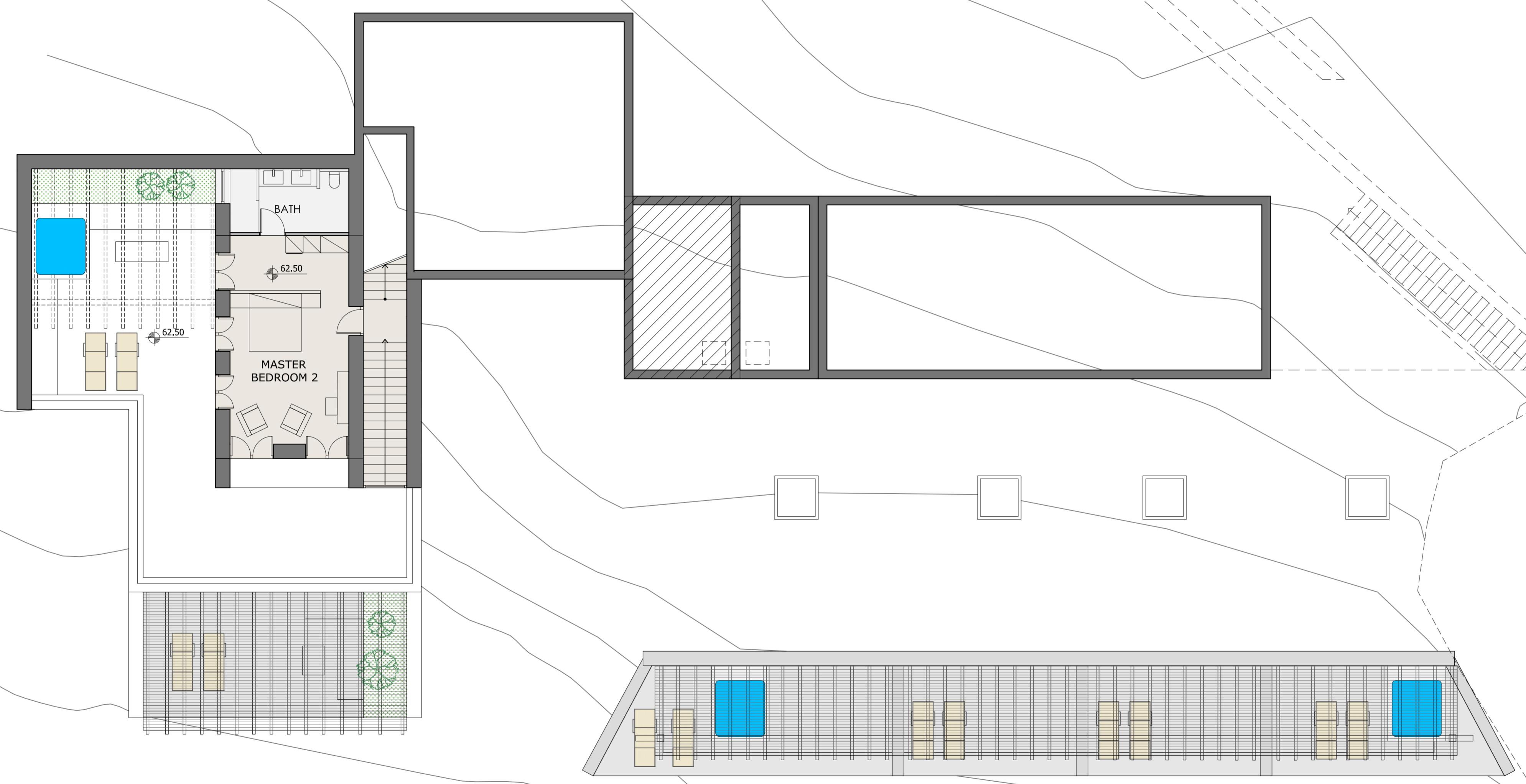


A16



**DETAILED AREA MEASUREMENT (VILLA 4)**

plot area : 4.236,07 [sqm]

in cave - plan level 0

4 guest rooms, 1 master bedroom, 5 baths  
surface area : 168,80 [sqm]

surface area [inc.walls] : 263,80 [sqm]  
(in cave - plan level 0)

covered corridor  
surface area : 95,00 [sqm]

plan level 1

master bedroom, bath  
surface area : 65,90 [sqm]

ground floor - plan level 2

Living/dining room/kitchen  
surface area : 124,10 [sqm]

Total surface area of building [inc.walls] : 453,80 [sqm] ( A )

Covered patios

in cave - plan level 0 / guest rooms/master bedroom  
surface area : 119,70 [sqm]

plan level 1

master bedroom  
surface area : 30,00 [sqm]

ground floor - plan level 2

Living/dining room/kitchen/pool  
surface area : 95,00 [sqm]

Total surface area of covered patios : 244,70 [sqm] ( B )

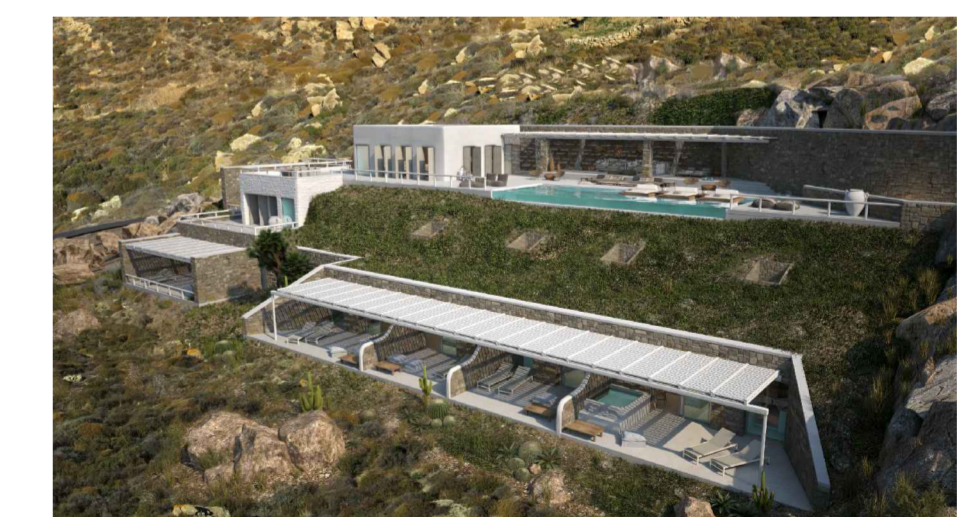
Total surface area of building [inc.covered patios] : ( A ) + ( B ) 698,50 [sqm]

auxiliary spaces

in cave - plan level 0  
surface area : 143,50 [sqm]

plan level 1  
surface area : 25,00 [sqm]

Total surface area of auxiliary spaces [inc.walls] : 168,50 [sqm] ( C )



Luxury Villas, Ag.Stefanos, Mykonos

Villa 4

DIWG No	TITLE
VL - 4.2	PLAN LEVEL 1 (+62.50)